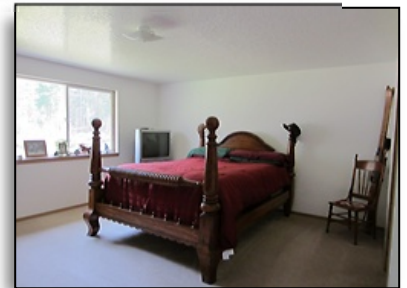
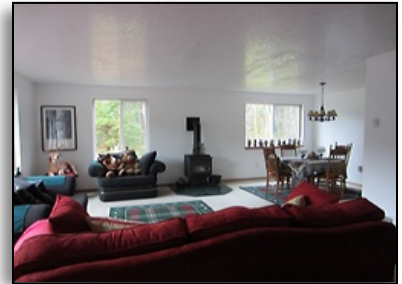


5 acres on Sandy River w/ Immaculate home & great shop



66707 E. Polly Ave, Rhododendron, OR 97049

Price Reduced! 5 acre lot, w/170 ft + of Sandy River frontage.

Lot can be subdivided (Perk test done on possible 2nd lot)

Immaculate house, professionally moved and new septic installed in 2006. 60x30 shop/garage, River & Cascade Range views. At end of a quiet street. Property located in approved area for USDA 100% loan. Appliances included, some furniture negotiable. Adair Home. Marketable timber. A MUST SEE!

Call for Current Price



- \* 5 Acres w/ 180 ft Sandy River frontage
- \* Lot could be subdivided
- \* Perk test done on possible 2nd lot
- \* Creek & Pond on property
- \* 30x60 shop with storage/parking/work area
- \* Property in qualified USDA loan area
- \* Adair Home built on site in 1996
- \* Appliances included
- \* Some furniture negotiable
- \* Great for vacation or full time use
- \* Views of Sandy River and Cascade Range
- \* Marketable Timber



To View This Property Call:

Patti Gay-Buoy  
Broker

Office: 503.413.9324



PO Box 285  
Brightwood, OR 97011

Patti@GoPatti.net  
1626822



The above information is deemed reliable but not guaranteed

BearPrinting.com

